

OCTOBER 2024

# THE UTHORT HUB

Official News Hub of the UTHort Team

## New Resources in the Queue FY25!

The UTHort Team is working diligently on multiple programs, events, and publications for 2025. We are currently revamping our TN Smart Yards program, writing BMP's (Best Management Practices) for landscapes, creating publications specific to trees in the home landscape, creating home turf resources, drafting the 2025 Home Garden Calendar, and much, much more! Stay tuned for all upcoming events in our December edition of the UTHort Hub! In the interim, feel free to peruse our vast selection of resources on our UTHort website!

FRUITS



VEGGIES



Did you know? Cover crops grow great gardens!

It's not too late to sow the seeds of success...

[Check out this resource!](#)



## This issue:

New Resources FY25  
PAGE 01

UTHort Office Hours  
PAGE 02

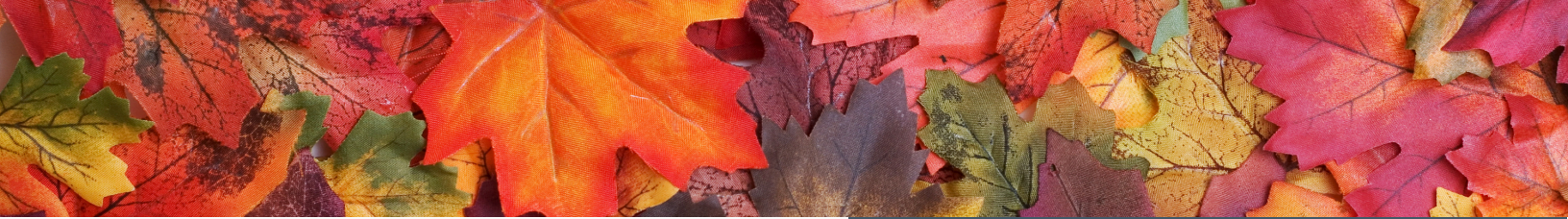
Welcome Home Series  
Underway  
PAGE 02

ETN/WNC Flood Status  
PAGE 02

TN Smart Yards Program  
PAGE 03

TEMG Training FY25  
Announced  
PAGE 03

Fall in the Gardens  
PAGE 03



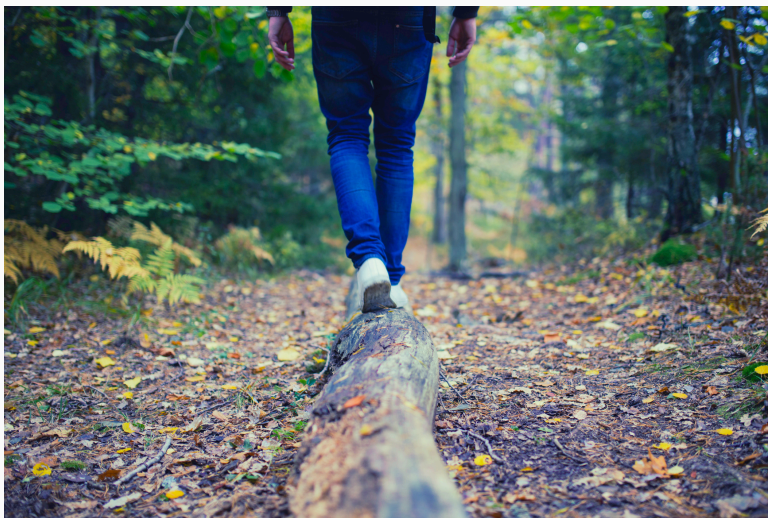
## UTHort Office Hours Available Online!

Did you miss out our UTHort Office Hours this summer? Never fear! Although, the 2024 gardening season is close to complete, but we are excited to offer you the opportunity watch past sessions to better plan for your 2025 growing season and continue learning through the doldrums of winter! We had a blast answering gardening questions from all of you across the state and look forward to visiting with you again in 2025!



**WATCH NOW**

Watch previous Office Hours via the “Watch Now” button!



## WELCOME HOME SERIES UNDERWAY

Our team is excited to host this informative series this month! We are excited to share tips for planning, preparing, and maintaining a perfect Tennessee lawn and landscape! We are incorporating sustainable practices for your landscape, as well as teaching participants all about the vast selection of annuals, perennials, shrubs, and trees to plant in their Tennessee landscape for the most success!

Interested in purchasing native plants for your landscape?

Check out this handy link for a large selection of natives!

<https://tiny.utk.edu/findconservationstuff>

## ETN/WNC Flood Status

*a note from Melody...*

As we navigate, quite literally, the path of destruction left behind in the wake of Hurricane Helene, we ask for your patience and grace to those counties affected in the far east portion of our state. Johnson, Carter, Unicoi, Washington, Greene, and Cocke counties suffered extreme loss throughout their counties, just as our friends in WNC suffered catastrophic devastation, all likely taking years to rebuild. For those of you affected in these regions, please know we are assisting in various recovery efforts throughout ETN and WNC to ease the burden for our friends, family, neighbors, and communities as much as possible.

We know our family of friends across the state have been (and are) continuing to rally behind those in need, whether it be with an encouraging word, a prayer sent up for strength, a helping hand along the way, or an organized effort to gather and send supplies to the region. We are thankful for all of you and appreciate you!

In conclusion, we as an Extension family have had colleagues lose their houses completely; family members who are still landlocked with no way out, no power, no cell service, and in need of medical assistance and/or supplies; and those serving in various capacities to assist in rescue, recovery, and disaster relief efforts. Our hearts go out to all those affected by this once in a lifetime tragedy, and we uplift our emergency responders who are working tirelessly around the clock to revive our neighborhoods throughout ETN/WNC.

We across all UT Extension offices are here for resources and information to help ease some of the difficulties. Please use this link to gather and glean info to assist you in the coming days and weeks: [Flood-Related Resources | UT Extension \(tennessee.edu\)](https://tiny.utk.edu/flood-related-resources)





## TN Smart Yards

Tennessee Smart Yards is an Extension-led program guiding Tennesseans on practices they can apply in their outdoor spaces to create healthier, more ecologically-sound landscapes and communities. Nine principles of stewardship serve as the foundation for the program and are explored in online modules.

You don't have to be an expert gardener to create a TN Smart Yard. All it takes is a willingness to learn and a desire to take actions described in our Workbook. Maintaining a TN Smart Yard provides natural functionality for homeowners through working with nature for the benefit of both. Learn why a "Smart Yard" is right for you and our environment.

Explore our path to certification here:  
<https://tnyards.utk.edu/certification/>



Team contributors: Dr. Natalie Bumgarner,

Anna Duncan, Evangelon James,

Melody Rose, Celeste Scott, & Haley Treadway

## Master Gardener Training FY25

Tennessee Extension Master Gardener training begins January 28, 2025! Be sure to check with your local county office to determine full schedule, application procedures, payment options, and individual county requirements.

For more information on the TEMG program statewide, check out our website:

[TN Extension Master Gardener Website](#)



**October 3-4,  
2024**

## Fall in the Gardens

Y'all don't want to miss this opportunity in West TN! Join Master Gardeners in Jackson for their annual plant sale throughout the weekend on-site at the West TN Research and Education Center.

The weekend includes opportunities for learning the art of kokedama, a beautiful Japanese gardening technique that transforms plants into stunning moss-covered living sculptures; crafting nature designs through the creation of prints using natural objects like leaves and flowers from our gardens; discovering the power of ecological principles in crafting sustainable, resilient gardens suited to the Southern landscape; and learning about woodies and perennials that come to life through their incredible traits, leaving a lasting first impression in the landscape. Whether its color, form, bloom, foliage, fragrance, or a whole host of other noteworthy attributes, these hardy characters are sure to stand out in your landscape!

Click here for complete details:

<https://westtn.tennessee.edu/other-events/>